

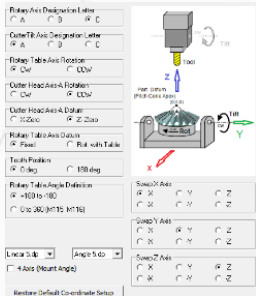
Dontyne

Systems

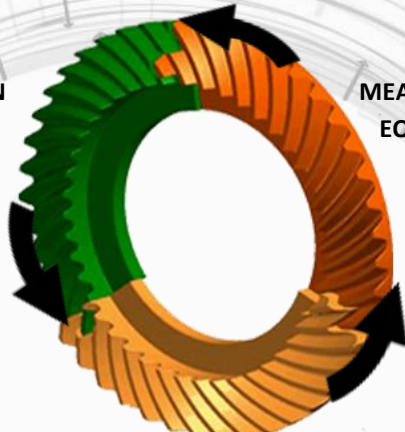
Gear Design | Analysis | Manufacture | Inspection

Closed-Loop Gear Machining (CLGM)

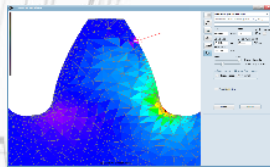
Gear Design Software, 5-Axis Machining, & Gear Measurement Equipment



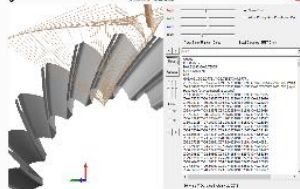
**DONTYNE
GEAR DESIGN
SOFTWARE**



**GEAR
MEASUREMENT
EQUIPMENT**



5-AXIS CNC MACHINING



FUNCTIONALITY

- Design Tools Quickly, Define Geometry and Contact Area
- Optimize Performance Under Load, Including Deflections
- Calculate Tooling – Standard End Mills, Ball Mills, Custom Cutters or Hobs
- Tool Path Simulation (Upstream) Simulation Pre-Metal Cutting
- G-Code Output Direct from Dontyne Software
- Use Measured Data to Evaluate Component Geometry and Performance
- Use Measured Data to Autocorrect for Deviation from the Master
- Spur & Helical, Bevel, and Spline Components

BENEFITS

- Flexible Production – Consistent Industry 4.0
- Improve Speed-to-Market: Blank to Finish Part on One Machine
- Cost Effective Alternative to Dedicated Gear Equipment
- Reverse Engineer Existing Design Using Measured Data

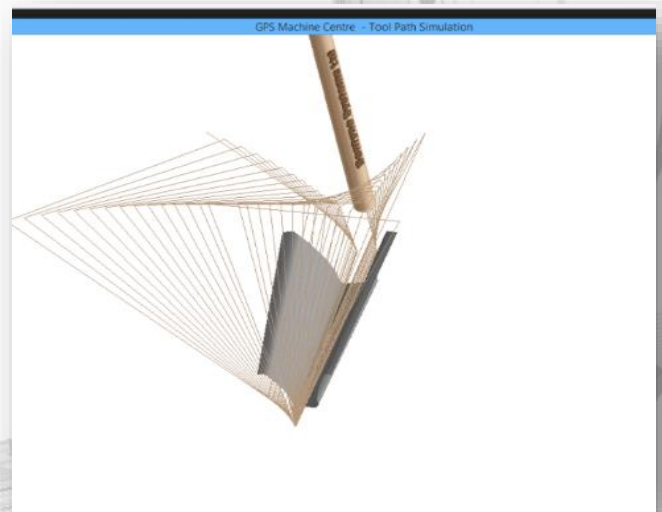
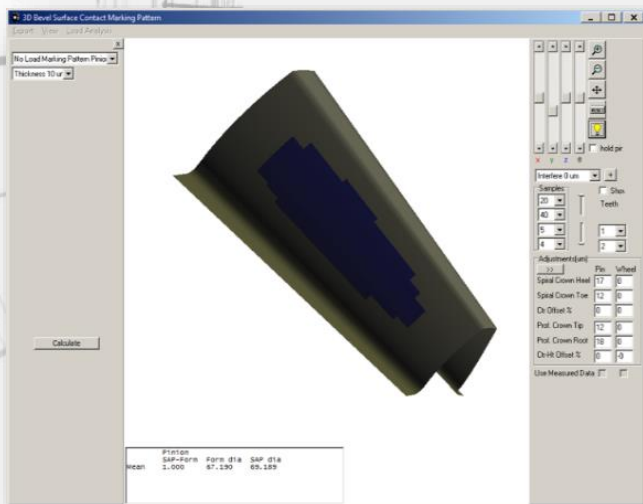


Dontyne Systems

Gear Design | Analysis | Manufacture | Inspection

Closed-Loop Gear Machining (CLGM)

Dontyne Systems has combined the power of precision machine tool performance with expertise in gear manufacture and design software to offer customers an innovative “Closed-Loop Gear Machining” (CLGM) solutions package. CLGM helps satisfy increasing gear market trends demanding greater flexibility, rapid changeover speed, less specialty tooling, affordability and accuracy. Production requirements are changing and large volume mass production to feed dedicated gear equipment is no longer viable or most efficient for everyone. *Technology improvement in software and computer speed combined with 5-axis machining and scanning measurement have enabled the development of the CLGM process – a reliable process for all gear manufacturers.* We look forward to helping customers across diverse industries achieve their demands, needs and aspirations in gear cutting with new tooling and machining flexibilities that were not previously imaginable!



Contact Marking Pattern & Tool Path Simulation - Dontyne

CONTACT US FOR A 60 MINUTE ONLINE DEMO

WORLD HEADQUARTERS
Rotterdam House
116 Quayside
Newcastle Upon Tyne
NE1 3DY
England

info@dontynesystems.com
+44 191 206 4021

Rich Easley
North America
Business Manager

reasley@dontynesystems.com
(513) 449-4296



www.dontynesystems.com