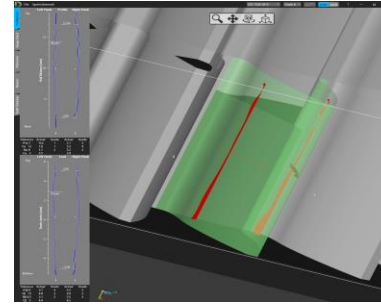


# Dontyne Integrated Gear Gauging System (DIGGS)

## Reduces workload in the Inspection Room

- Up to 100% gear inspection
- Workshop operation
- Calibration using production gear
- Inspection cycles profile and lead as low as 30 seconds
- Versatile and easy to use
- Clear results
- Integrates with Dontyne design software



GOR inspection result confirmed within 1um on import to DIGGS



## FAQs

### Where is the grading system?

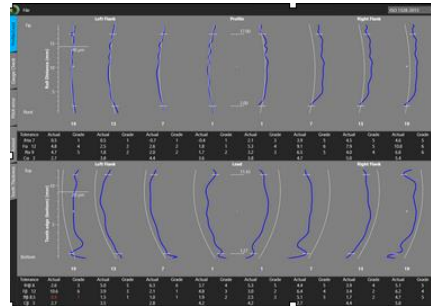
*This is a gauge not a CMM and uses pass/fail ranges for easy interpretation during production.*

### How is it so accurate?

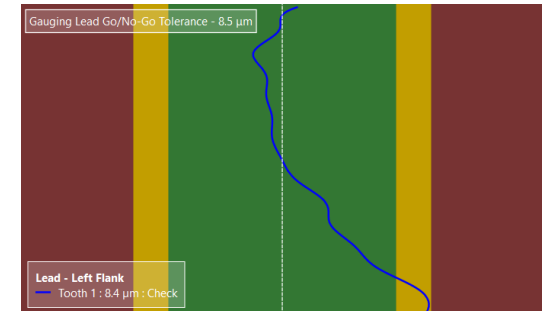
*It uses physical part calibrated to gauge of record to control accuracy.*

### What about temperature change?

*The system will warn users of excessive temperature change and the system can be re-calibrated using reference gear*



Gauge Of Record creates a reference measurement for DIGGS using production part



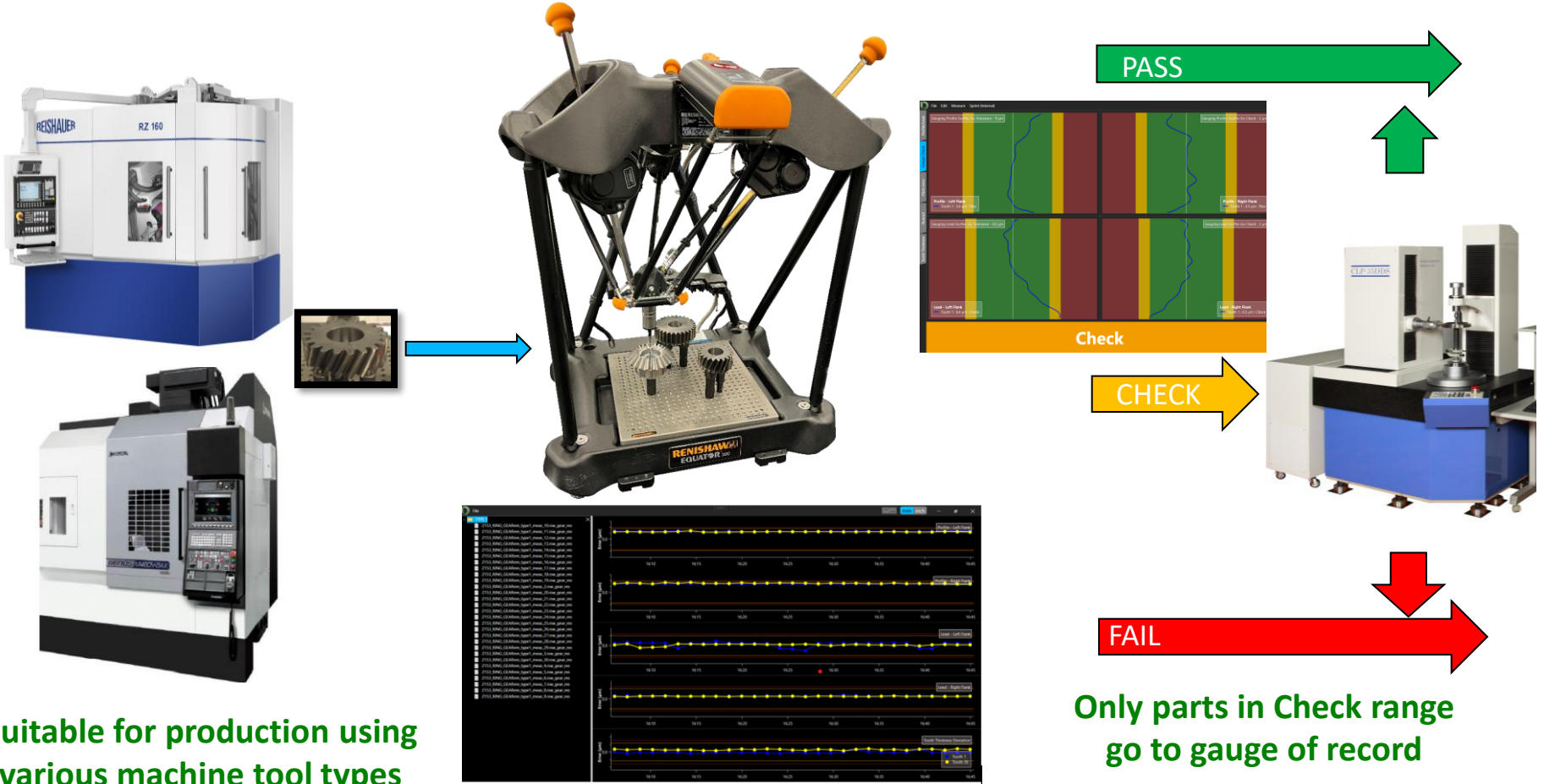
Set ranges for deviation from reference gear surface Pass (green), Fail (red) and Check (yellow)



info@dontynergears.com  
www.dontynergears.com

# Dontyne Integrated Gear Gauging System (DIGGS)

Reduces workload in the Inspection Room



[info@dontyngears.com](mailto:info@dontyngears.com)  
[www.dontyngears.com](http://www.dontyngears.com)