



XI'AN & EE COMMODITY AND  
PRODUCT PROCUREMENT  
COOPERATION

PRESENTED BY:

EASLEY ENTERPRISES (EE)

SEPTEMBER 2024

# INTRODUCTION

- Xi'An Firewood Commerce and Trade (XFT) and Easley Enterprises (EE) have formed a cooperative agreement to provide procurement services to North American, Chinese and European companies
- Primary focuses are supply of commodities to Chinese companies from global suppliers as well as finished goods flow between Chinese and North American manufacturers
- Arrangement began with acquisition of US mined silica exported to China
- Procurement support services is now expanding to a variety of commodities and products for both import to and export from North America
- Plans are moving to also establish manufacturing and material processing capabilities in North America

# EE COMPANY OVERVIEW

- EE provides sales, marketing, product and procurement support to international principals in the North American market
- Primary hardware products include cut metal parts (gears, screws, nuts etc.)
- Gear design, manufacture and inspection software products; gear/gearbox consulting services and gear inspection and life test hardware
- Procurement support services on a variety of commodities for both import to and export from North America
- Focused on direct sales, procurement and support of quality niche products

# FOUNDER - RICH EASLEY

- ✓ BS Electrical Engineering, MBA; Ohio University
- ✓ NCR Corp.; Electromagnetic Compatibility Engineer
- ✓ Cincinnati Electronics; Project/Product Manager Infrared Sensors and Camera Products
- ✓ Makino Corp.; Service Manager A55 CNC Machines
- ✓ Innovative Data Communications; Partner, Electronics Import and Distribution
- ✓ Halifax Rack & Screw; North America Business & Sales Manager
- ✓ EE; Owner and President



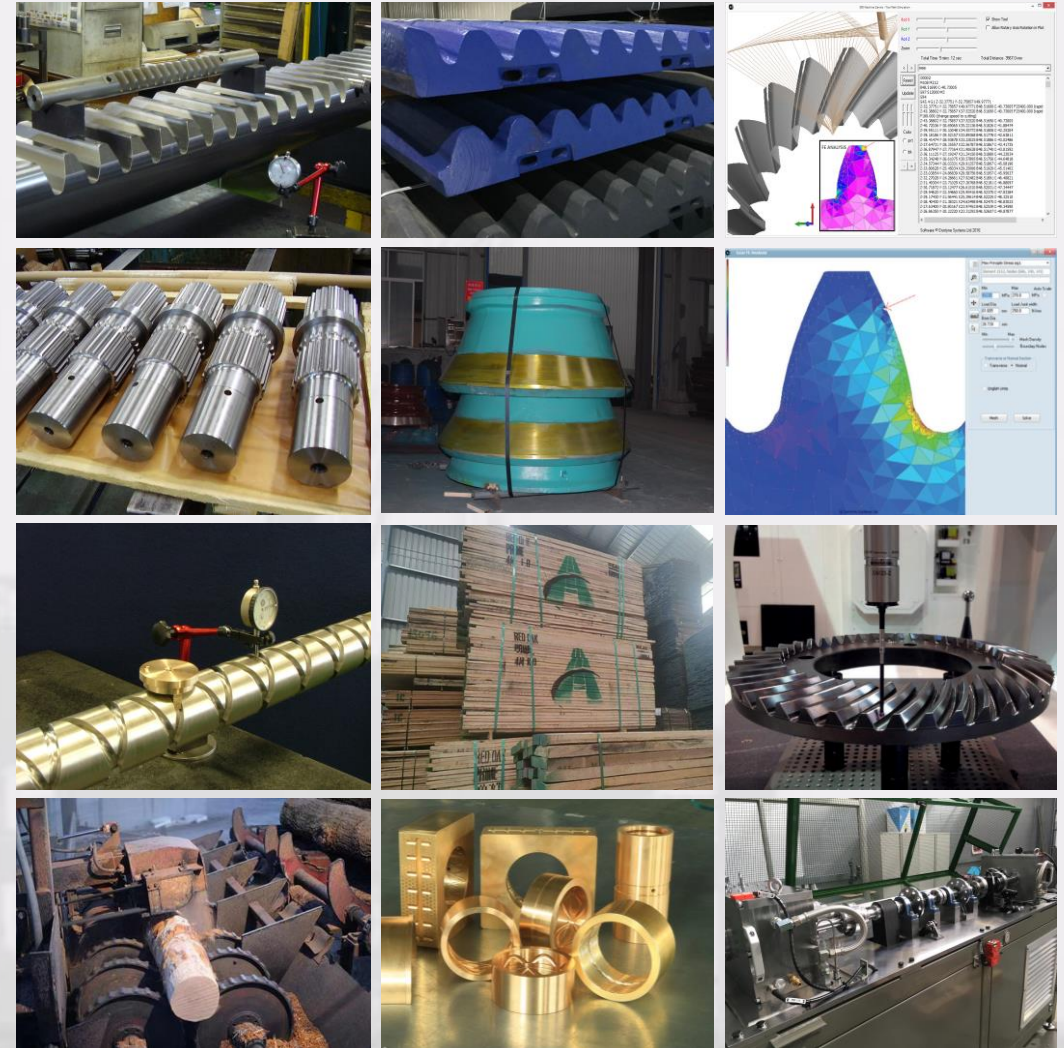
# EE PRINCIPALS



- **Halifax Rack & Screw (HRS) Brighthouse, UK;** Gear rack, Pinions, Round Gears, Leadscrews, Nuts, Machined Parts
- **Dontyne Systems Washington, UK;** Gear Design, Analysis, Manufacture and Inspection Software Modules
- **Dontyne Gears Prudhoe, UK;** Gear Consulting, Small Volume Manufacture and Inspection/Test Hardware
- **Xi'an Firewood Commerce & Trade Company Xi'an, China;** Copper Mining, Quartz Products and Commodity Import/Export

# PRODUCTS

- **Gears:** Rack, Pinion, Spur, Helical, Bevel, Worm, Convoloid™, Others
- **Cut Metal:** Keys, Tapers, Pins, Shafts, Rails, Screws, Power Nuts, Others
- **Gear Development Software:** Design, Analysis, Manufacture, Inspection and Optimization
- **Consulting Services:** Gear Design, Manufacture, Test and Inspection
- **Inspection and Test:** Comparators, CMM, Gear Life Test Beds, Others
- **Commodities:** Silica, Petroleum, Wood, Glycerin, Copper, Ewaste and Others



# XFT COMPANY OVERVIEW

- Established in 2018
- Offices in China and Taiwan
- Part-owner Copper Mine in Zambales Province, Philippines
- 58 Employees Currently
- Business Areas: Ore and Commodities Trading, Mining and Silica Products Manufacture
- New Facility Recently Completed Construction and Opening for Operation by Q4 2024
- Brand New Facility with 650,000 ft<sup>2</sup> Working Space Situated on 16.6 acres Land
- **XFT Has Partnered with EE to Expand Procurement Services to Established Clients, Build Relationships to North American Clients and Open Production Capacity in the US**

# Founder- Bohao Zhao

## CEO / Director of the Board



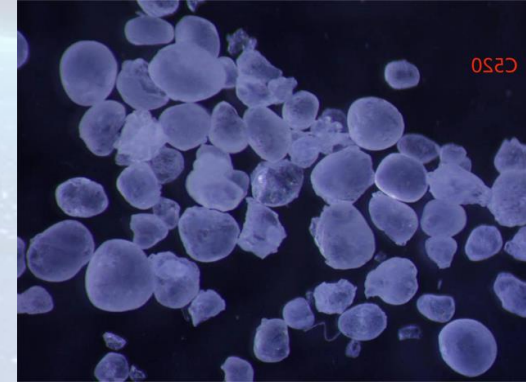
- Attended School Grades 7-12 and University in the United States
- Business Management Graduate from the University of Cincinnati
- Founded XFT Company in 2018
- Vice President of Lingbao Chamber of Commerce
- Advisor to Xi'An International Trade and Logistics Park
- Advisor to Shanghai Customs Anti-Smuggling Bureau



# XFT LOCATION & CAPACITY

- Located in Xi'an International Trade & Logistics Park
- New Factory Building Construction Completed in Early 2024:  
Total Investment Over \$29M
- Final Permitting and Electrical Work Being Completed in Q3 2024
- Machine Installation and Operations Planned to Start Q4 2024
- 650,000 ft<sup>2</sup> Facility Located on Approximately 16.6 Acres of Land
- Three Individual Buildings

# CURRENT PRODUCTS/COMMODITIES PROCURED OR OF INTEREST



# COMMODITY: SILICA PRODUCTS

<b>GLASS</b>  Specialty products supplied to the semiconductor industry	<b>CERAMICS</b>  Products supplied to petrochemical and mechanical seal parts mfg. industries	<b>QUARTZ TUBES</b>  Products supplied to the lamp and electric light sources manufacturers	<b>QUARTZ CRUCIBLES</b>  Specialty products supplied to high quality industrial and R&D applications
---	---	---	--

XFT and EE have begun a partnership by acquiring silica raw material in the US and exporting it to China. Working with existing large Chinese production partners, XFT has recently expanded business offerings into processed silica products such as glass, ceramics, quartz tubes and quartz crucibles. Silica is the primary raw material in these production processes.

XFT and EE together have begun planning for the expansion of these manufacturing operations to a second facility in the United States. A site has been identified in the greater Cincinnati metropolitan area and negotiations are ongoing for construction of a second silica processing facility.

# COMMODITY: WOOD/LUMBER

- Red Oak
- White Oak
- Pine
- Ash
- Black Walnut
- Cedar
- Hickory
- Maple
- Sycamore
- Box Elder
- Cherry
- Locust
- Mahogany



# COMMODITY: PETROLEUM'S

- Light Crude
- EN590
- LNG
- LPG
- Bitumen: 40/50, 60/70, 85/100



# COMMODITY: GLYCERIN/OTHERS

- Crude Glycerin
- Industrial Glycerin
- Medical Glycerin
- Soybeans
- Gold
- Copper
- Ewaste





**THANK YOU**

For more information, please contact Rich Easley

[reasley@easleyllc.com](mailto:reasley@easleyllc.com)